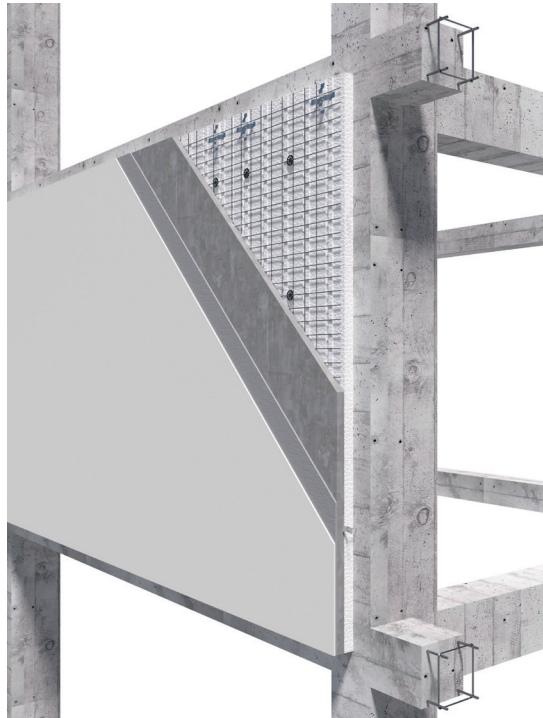
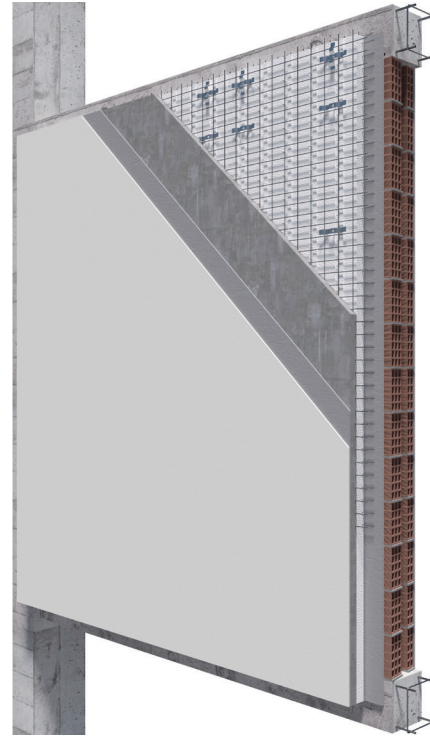


Configurazione **TIPO A**



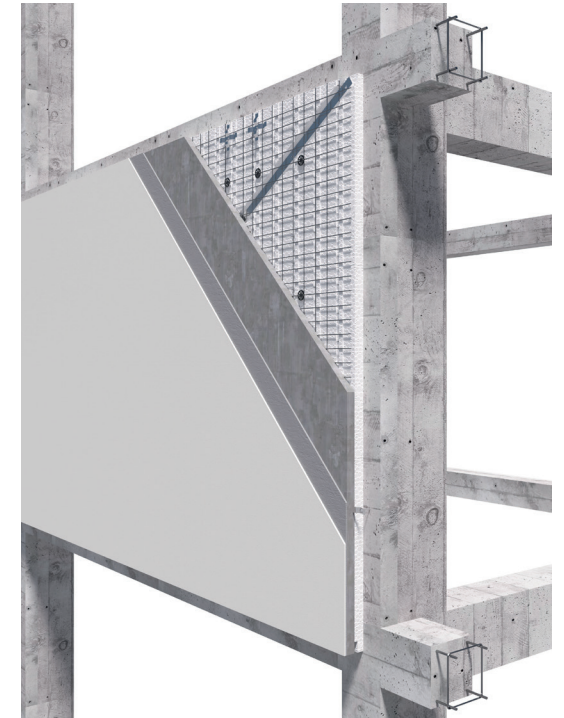
A ANTIESPULSIONE
TAMPONATURA

Configurazione **TIPO B**



B ANTIESPULSIONE
TAMPONATURA
BIDIREZIONALE

Configurazione **TIPO C**

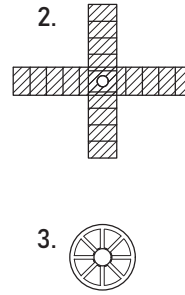
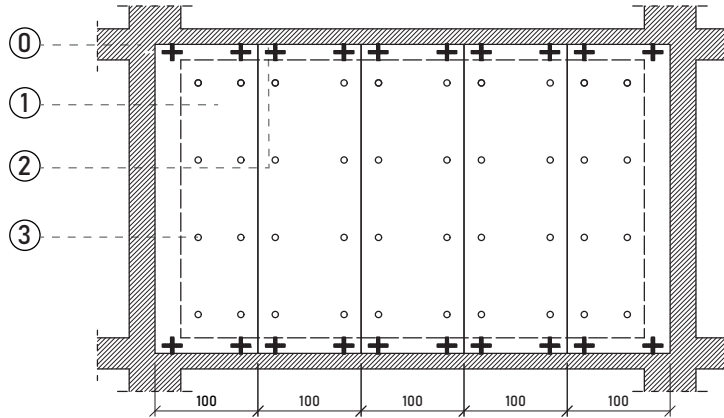


C ANTIESPULSIONE
+ IRRIGIDIMENTO
SISMICO

SCHEMI DI FISSAGGIO

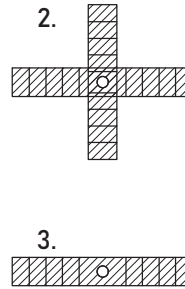
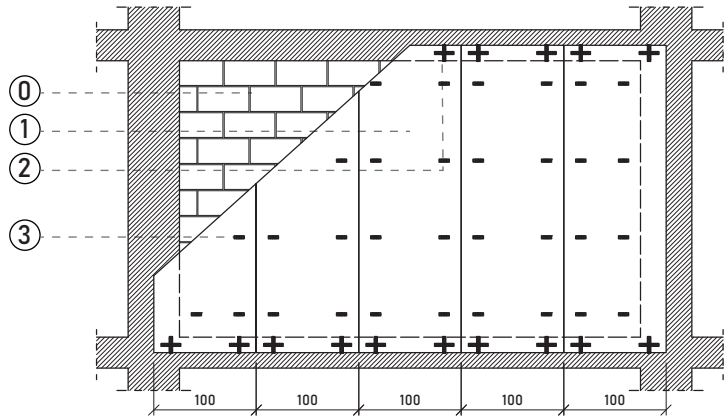
SISMA SHIELD 

Configurazione **TIPO A**



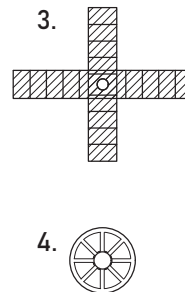
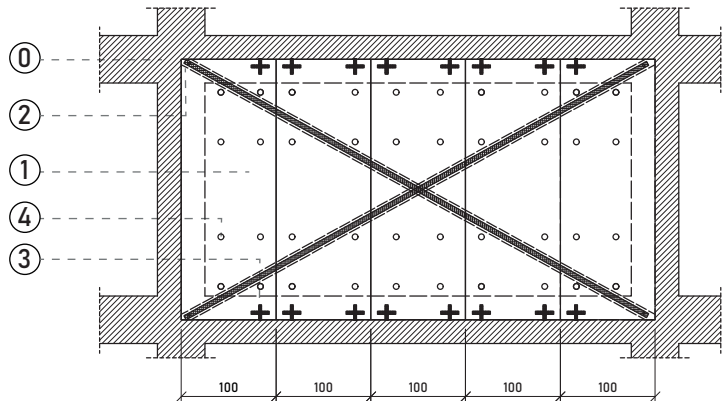
- 0. Telaio in cemento armato - struttura esistente
- 1. Pannello SISMA SHIELD Antiribaltamento
- 2. ANCHOR-SHIELD + Tassello ancorante a vite
Piastra Sagomata tipo Hilti HUS3
- 3. Tassello plastico
Fissaggio tipo Fischer FIF-CN II

Configurazione **TIPO B**



- 0. Muratura a cassetta - struttura esistente
- 1. Pannello SISMA SHIELD Antiribaltamento
- 2. ANCHOR-SHIELD + Tassello ancorante a vite
Piastra Sagomata tipo Hilti HUS3
- 3. Piastrina + Fissaggio prolungato
tipo Fischer SXRL

Configurazione **TIPO C**



- 0. Telaio in cemento armato - struttura esistente
- 1. Pannello SISMA SHIELD Antiribaltamento
- 2. Tassello ancorante a vite (tipo Hilti HUS3)
dimensionato a sforzo sismico assiale trasmesso dal piatto diagonale
- 3. ANCHOR-SHIELD + Tassello ancorante a vite
Piastra Sagomata tipo Hilti HUS3
- 4. Tassello plastico
Fissaggio tipo Fischer FIF-CN II



SISMA SHIELD

SISMA SHIELD ANTIRIBALTAMENTO

by Sisma Shield